

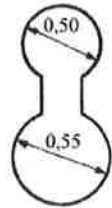
DI-102

Device for the mounting of nylon threads

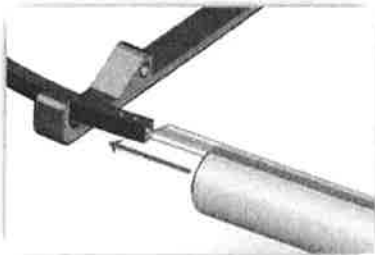


Introduce the needed length of thread in the shaft. As shown on the picture, the size is not often symmetrical, place the smallest diameter in the groove.

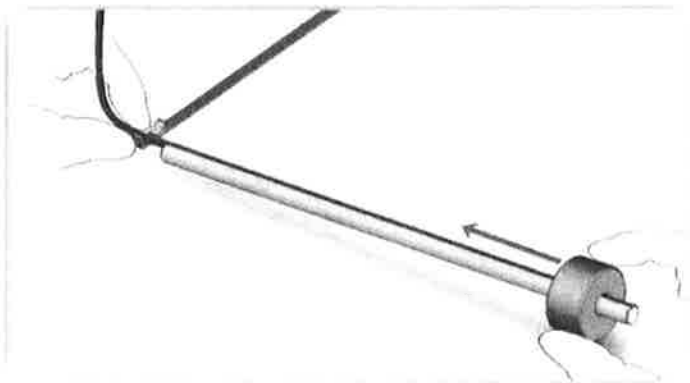
The device is designed for a maximum size of 0.50 mm. It is possible to use the sizes 0.45 x 0.55 mm and 0.50 x 0.55 mm.



In order to make the passing through of angles in the frame easier, cut the tip of the thread in very inclined bevel as illustrated on the picture. The use of nail clippers is recommended for a clean cutting.



While holding the thread on the shaft with the thumb and the forefinger, start to make it slide in the frame.



Then, by holding the frame, push the cylinder to make the thread slide in the frame.

The movement must be fast enough and perfectly in line to facilitate the introduction of the thread.